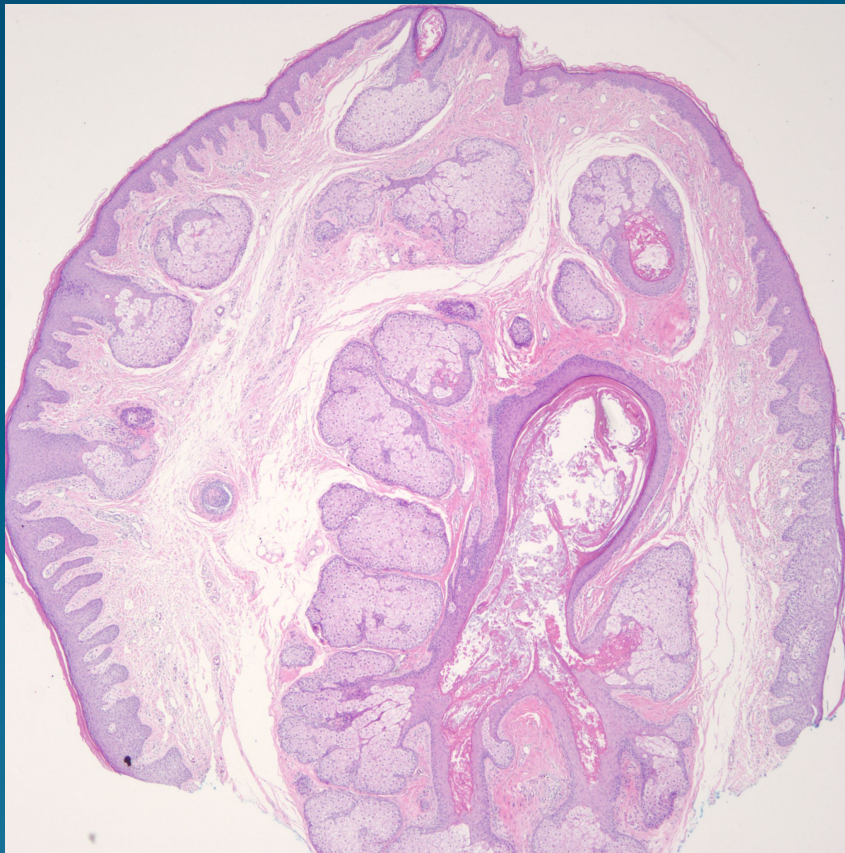


What is the best diagnosis?

- A. Muir-Torre tumor
- B. Sebaceous adenoma
- C. Trichofolliculoma
- D. Trichoepithelioma
- E. Infundibulocystic basal cell carcinoma

Trichofolliculoma

Pearls



- Dermal epidermal cyst with multiple pilosebaceous units surrounding cyst
- No cytologic atypia
- May have stroma-stroma clefting